

FEATURES

STANDARD



OPTIONAL



USED BY:

- BANKS AND CREDIT INSTITUTIONS
- SERVICE BUREAUS
- RETAILERS
- INSURANCE COMPANIES
- HMOS AND TPAS
- GOVERNMENT
- CLUBS AND ASSOCIATIONS

IDEAL FOR MAILING:

- FINANCIAL CARDS
- LOYALTY PROGRAMS
- MEMBERSHIP CARDS
- INSURANCE MEMBERSHIP CARDS
- STATE AND GOVERNMENT ID CARD PROGRAMS I.E. DRIVER LICENSES, BENEFIT CARDS, STATE INSURANCE CARDS AND HEALTHCARE CARDS

SOFTWARE:



Professional card production
Intelligent and secure data
management
High level graphic elaboration



PRO SERIES CAM 8080



CARD AFFIXING & MAILING SYSTEM 8080

CAM 8080 is the CIM solution for **CARD MATCHING, AFFIXING** and **MAILING**. The system offers **100% DATA MATCH** between the card and the carrier using a read back function and real time database access. It has been developed with flexibility, easy of use and it is ideal for **HIGH PRODUCTION VOLUMES**.

VERSIONS

- ✓ CAM 8080: with printer for carrier personalization in real time.
- ✓ CAM 8080 STREAM FEEDER: with stream feeder for feeding and inserting of pre-printed carriers.
- ✓ CAM 8080 HIGH PERFORMANCE: with printer and feeder to satisfy all needs.

MAXIMAILERsmart+

The **MAXIMAILER SMART+** is a flexible and reliable multi-station system, directly connected to CAM 8080 **RECEIVES THE CARRIER WITH THE AFFIXED CARD, FOLDS AND ENVELOPS IT**. Other inserts can be managed. The system is very versatile and can be used in a wide variety of card applications. It is simple and intuitive to use and allows for the management of different envelope formats as well as insertion of brochures of various thicknesses and dimensions.



CARD AFFIXING & MAILING SYSTEM 8080

CAM 8080 is the CIM solution for card matching, affixing and mailing, it has been developed with flexibility, easy of use and high throughput in mind.

The CAM 8080 will match, affix and mail a complete document with additional inserts (optional). The unit can personalize the carrier with variable printing using a commercially available laser printer or it can feed a pre-printed document from an optional stream feeder. The system offers 100% data match between the card and the carrier using a read back function and real time database access. The CAM 8080 has a new transport system for the card and the carrier and together with the optimization of the labelling station offers a high throughput. The CAM 8080 is available in three different versions to satisfy even the most demanding production requirements.

MAIN FEATURES

DATA CAPTURING MODULE

Barcode reader on the front and back of the card or a vision inspection system to visually capture and verify the data on the card (i.e. OCR or 2D Data Matrix).

ENCODING MODULE

Magnetic stripe, contact and contactless card read back.

CARD TRANSPORT SYSTEM HP

Friction belt design card transportation system to avoid scratches on the cards.

CARRIER TRANSPORT SYSTEM HP

Carrier transport device with an extra long bridge which allows easier movement of the carrier and the possibility to read the barcode (used to verify the enveloping process sequence) in both top and bottom positions.

LABELLING MODULE

The labelling module is equipped with the following features:

- A.L.D.S. or Auto-learning Label Detector System
- L.P.D.S. or Label Presence Detector System to recognize the presence of a label on the card
- A.S.T.S. or Anti Sliding Traction System
- L.R.L.S. or Label Roll Locking System
- A.L.P.S. or Automatic Label Roll Positioning System
- Label roll replacement system extremely fast and easy
- Label roll yield up to 3.100 standard size (38x13 mm/1.50" x 0.51") labels or 6.200 small size (13x13/0.51"x0.51) labels

FAULTY CARRIER REJECT HOPPER

Self contained carrier reject hopper to ensure continuous operation in the event of carrier rejection (reset phase only).

STREAM FEEDER

The CAM 8080 can be configured with a stream feeder for feeding and inserting of pre-printed carriers. The stream feeder can hold up to 1.000 pre-printed carriers in A4 size and allows the system to operate with a higher throughput.

LASER PRINTER for carrier personalization in real time

The CAM 8080 can be configured with three different commercially available laser printers:

- Kyocera FS9530DN series - B/W laser printer, up to 51 ppm in letter size. Option: front/back print module; extra large carrier hopper for a total capacity of 3.000 carriers.
- Kyocera FS4100DN series - B/W laser printer, up to 45 ppm in letter size. Option: front/back print module; extra large carrier hopper for a total capacity of 2.000 carriers.
- HP 602DN series - B/W laser printer, up to 52 ppm in letter size. Option: front/back print module; extra large carrier hopper for a total capacity of 1.100 carriers.

Extra hopper(s) configuration allows the "Multi-hopper function" for inserting of attachments of the same carrier format – Letter size or A4. This is an optional feature.

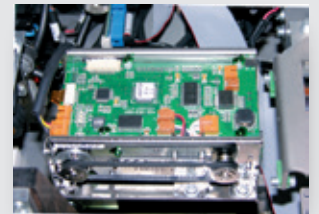
Versions currently available. Data subject to change.

IN-LINE CONFIGURATION

Beside working stand-alone the CAM 8080 works also in-line. With the LinkWare option, the CAM 8080 can operate in-line with other PRO SERIES machines to perform an end-to-end production process from card personalization to MAILING.



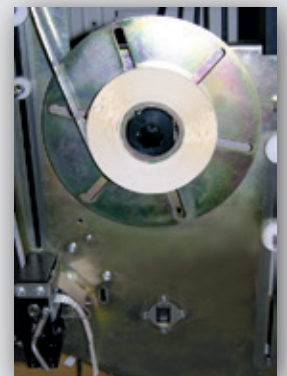
Data capturing module



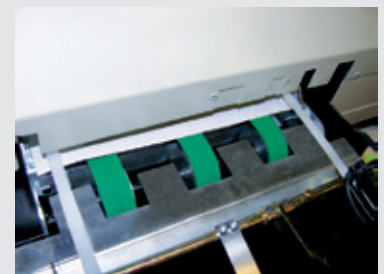
Encoding module



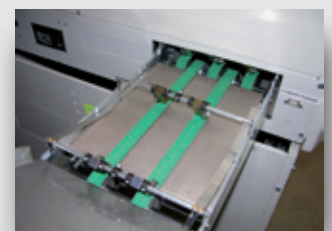
Card transport system HP



Labelling module



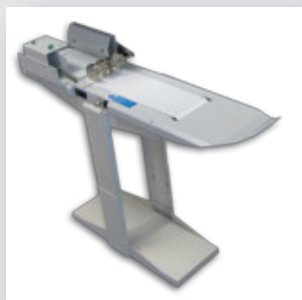
Carrier reject hopper



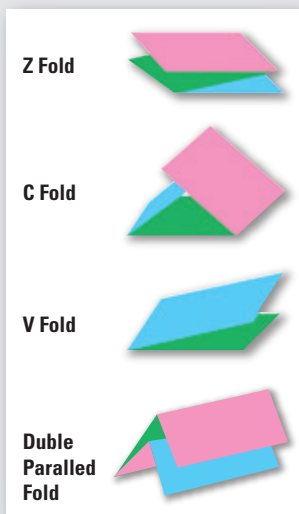
Carrier transport system HP



15" color touch screen



Envelope conveyor



Carrier folding



ADVANCED FOLDING & ENVELOPING SYSTEM

The CAM 8080 can be configured with MAXIMAILER SMART+ a highly productivity system that folds and inserts card carriers and leaflets. The system can be customized to meet the requirements of the widest range of mailing applications.

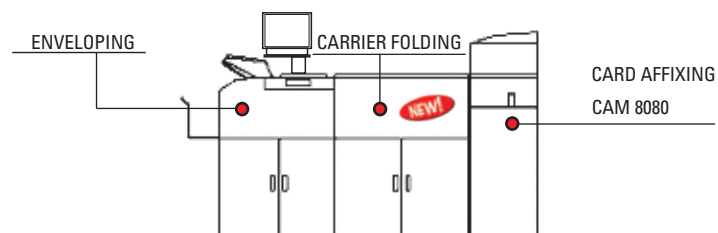
The MAXIMAILER SMART+ is a multi-modular system that revolutionizes the mailing process and can be adapted to the various market requirements. Directly connected to CAM 8080, the MAXIMAILER SMART+ receives the carrier with the affixed card, folds and envelopes it. Other inserts (pre-folded brochure or booklet, up to 4 mm / 16 mil thick) can be managed by adding additional modules.

The MAXIMAILER SMART+ is equipped with a new folding station. The module's mechanics and functions have been refurbished, guaranteeing higher reliability and elevated fulfillment, which combined with operating system updates, offers a high performance solution

- Higher accuracy and reliability in the folding process, changes made to the transportation and mechanical system.
- Reduced db (more silent), thanks to the modules improved sound proofing.
- Easy access to the folding module allowing the removal jammed paper.

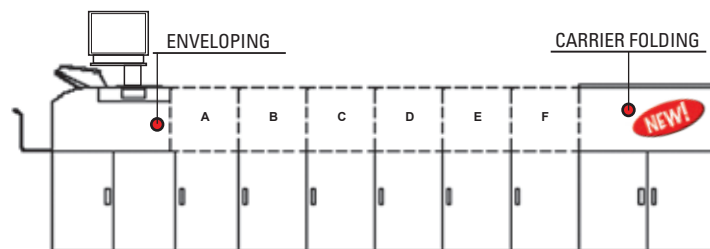
Thanks to the MAXIMAILER SMART+'s user interface the module is managed intuitively and is extremely easy to use. The newest generation, 15' touch-screen display and enhanced operating system guide, assist the operator with a new type of controls. The new, user-friendly display allows the user to manage all the phases of the production process while remaining at their station, in addition, the new assistance function aids in the setup and in problem resolution.

The MAXIMAILER SMART+ is powerful and reliable, with speed up to 3.000 feeds per hour (stand alone).



MODULAR SYSTEM

The MAXIMAILER SMART+ is completely modular, up to 6 modules (A+B+...+F) can be linked in-line for attachment between the enveloping station and the carrier folder. You may configure it to your needs.



INSERTION MODULES

Insertion modules are available with single or double tray and can manage 10 x 21 cm / 3.94" x 8.27" size (e.g. booklet, brochure) for maximum thickness of 6 mm / 0.236", including the carrier with the card. Optional: Tower Folder, designed to save space.

Each module of MAXIMAILER SMART+ is equipped with double feeding control that ensures a seamless monitoring and verification of the whole process. If one feeder runs empty, another one takes over avoiding time breakdown

MULTICARD SOFTWARE

Easy-to-use, extremely flexible and ready for a variety of system configurations. The PRO SERIES equipment and MULTICARD Software have been developed for easy and secure card personalization and mailing using advanced technologies of data recognition and matching. Windows XP/Vista/7/8 operating system compatible. 100% data matching and carrier printing using data on card (magnetic stripe, smart card, barcode). Texts, images and logos management. Security checks: automatic carrier-card match verification by reading the barcode printed on the carrier; card sequence check before affixing on carrier

FEATURES AND SPECIFICATIONS

PERFORMANCE up to 2200 CPH depending on system and format;

AFFIXING - CARD AND CARRIER HANDLING

card dimensions CR80 - ISO standard
card thickness 0.76 ÷ 0.8 mm / 29,92 ÷ 31,5 mil
input hopper 200 cards, can be reloaded without interrupting card production
pre-printed carrier stream feeder with 1.000 carrier capacity
pre-embossed cards Yes
cards per carrier up to 8 (4 if folded)
card positioning defined by software

FOLDING & INSERTING - CARRIER, INSERT & ENVELOPE

carrier dimensions standard A4, letter size or legal size
carrier weight 80-100 gsm
carrier feed single one; multiple carrier
carrier printing Optional: Kyocera FS3800 series - Kyocera FS9100/9500 series - HP 4200/4300/4015 series
carrier folding Maximailer: Z, C, V folds
envelope types Maximailer: C5, C6

READING OPTIONS & DATA MATCHING

magnetic stripe reader standard reading system: 3 ISO 7811 tracks, LoCo, HiCo, JIS
OCR reader OCR KIT - NEW camera system provided with LED lighting to match card text with database
barcode reader NEW card barcode reader front/rear mono/bidimensional
smartcard unit contact and contactless
barcode carrier verification Yes - front / rear - for card/carrier matching

COMMUNICATION INTERFACE & SOFTWARE

communication interface RS232 serialport
operating system **Multicard** compatible with Windows XP/Vista/7/8.
Error management, job report, DB source ODBC/OLEDB. Expert Field Engine.
application program User interface monitoring, card production control, pre-encoded card reading with complete "processing operation, system status and help messages displayed on personal computer. Rejected card alarm notification. Label presence sensor"
connection Smart Database, Multicard, DB Matching with Mag Tape (ISO, Jis), Microchip, Barcode. Microsoft Office integration, Barcode control. Several types of Database tables can be connected. Access, SQL Server, Oracle, and through ODBC Text, Excel.
protocol Chip10
software application (optional) **PowerCard Integration:** The PowerCard Integration software is capable of managing the whole production process, from data import to card mailing, supervising multiple production lines simultaneously and ensuring complete integrity of the production area in real time. PowerCard Integration is the perfect application for production environments where a high throughput and a wide range of jobs are the norm.

HARDWARE

power supply 100 - 117 -220 - 230 or 240 Volts - 50 or 60 Hz
power consumption CAM 8080 + Maximailer: 1100 W max
operating temperature 5° ÷ 35°C / 41° ÷ 95 °F
relative humidity 30% - 90% without condensation
dimensions (WxDxH) 1070 x 570 x 1220 mm / 42.12" x 22.44" x 48" in
weight 120 Kg (CAM 8080) / 265 lbs

PRO SERIES MULTI MODULAR SYSTEM - The Pro Series units can operate in a stand alone or in-line configuration with 2 up to 4 modules. The **CAM 8080** can be connected to: **MF 6000, T 1000/2000, E 1000/2000, C 1000, LD 1500**. The modular concept of the hardware with the easy-to-use MultiCard software makes the PRO SERIES a unique scalable system for complete card personalization.

