

FEATURES

STANDARD



OPTIONAL



USED BY:

- BANKS AND CREDIT INSTITUTIONS
- SERVICE BUREAUS
- RETAILERS
- INSURANCE COMPANIES
- HMOS AND TPAS
- GOVERNMENT
- CLUBS AND ASSOCIATIONS

IDEAL FOR MAILING:

- FINANCIAL CARDS
- LOYALTY PROGRAMS
- MEMBERSHIP CARDS
- INSURANCE MEMBERSHIP CARDS
- STATE AND GOVERNMENT ID CARD PROGRAMS I.E. DRIVER LICENSES, BENEFIT CARDS, STATE INSURANCE CARDS AND HEALTHCARE CARDS

SOFTWARE:



Professional card production
Intelligent and secure data
management
High level graphic elaboration



PRO SERIES CAM 3030



CARD AFFIXING & MAILING SYSTEM 3030

CAM 3030 is the CIM solution for **CARD MATCHING, AFFIXING** and **MAILING**. The system offers **100% DATA MATCH** between the card and the carrier using a read back function and real time database access. It has been developed with flexibility, easy of use and it is ideal for **MEDIUM PRODUCTION VOLUMES**.

MAXMAILERsmart

The **MAXMAILER SMART** is a flexible and reliable multi-station system, directly connected to CAM 3030 **RECEIVES THE CARRIER WITH THE AFFIXED CARD, FOLDS AND ENVELOPS IT**. Other inserts can be managed. The system is very versatile and can be used in a wide variety of card applications. It is simple and intuitive to use and allows for the management of different envelope formats as well as insertion of brochures of various thicknesses and dimensions.



CARD AFFIXING & MAILING SYSTEM 3030

CAM 3030 is the CIM solution for card matching, affixing and mailing, it has been developed with flexibility and easy of use in mind

The CAM 3030 will match, affix and mail a complete document with additional inserts (optional). The unit can personalize the carrier with variable printing using a commercially available laser printer. The system offers 100% data match between the card and the carrier using a read back function and real time database access.

MAIN FEATURES

DATA CAPTURING MODULE

This system (optional) provides 100% DATA MATCHING/VERIFICATION of the card between:

- PAN
- ID NUMBER
- CARD HOLDER'S NAME
- EXPIRY DATE
- MAGNETIC STRIPE DATA
- CHIP DATA

Barcode reader on the front and back of the card or a vision inspection system to visually capture and verify the data on the card (i.e. OCR or 2D Data Matrix).

ENCODING MODULE

Magnetic stripe, contact and contactless card read back.

CARD TRANSPORT SYSTEM HP

Friction belt design card transportation system to avoid scratches on the cards.

LABELLING MODULE

The labelling module is equipped with the following features:

- A.L.D.S. or Auto-learning Label Detector System
- L.P.D.S. or Label Presence Detector System to recognize the presence of a label on the card
- A.S.T.S. or Anti Sliding Traction System
- L.R.L.S. or Label Roll Locking System
- A.L.P.S. or Automatic Label roll Positioning System
- Label roll replacement system extremely fast and easy
- Label roll yield up to 3.100 standard size (38x13 mm/1.50" x 0.51") labels or 6.200 small size (13x13/0.51"x0.51") labels

FAULTY CARRIER REJECT HOPPER

Self contained carrier reject hopper to ensure continuous operation in the event of carrier rejection (reset phase only).

LASER PRINTER for carrier personalization in real time

The CAM 3030 can be configured with three different commercially available laser printers:

- Kyocera FS9530DN series - B/W laser printer, up to 51 ppm in letter size. Option: front/back print module; extra large carrier hopper for a total capacity of 3.000 carriers.
- Kyocera FS4100DN series - B/W laser printer, up to 45 ppm in letter size. Option: front/back print module; extra large carrier hopper for a total capacity of 2.000 carriers.
- HP 602DN series - B/W laser printer, up to 52 ppm in letter size. Option: front/back print module; extra large carrier hopper for a total capacity of 1.100 carriers.

Extra hopper(s) configuration allows the "Multi-hopper function" for inserting of attachments of the same carrier format – Letter size or A4. This is an optional feature.

Versions currently available. Data subject to change.

IN-LINE CONFIGURATION

Beside working stand-alone the CAM 3030 works also in-line. With the LinkWare option, the CAM 3030 can operate in-line with other PRO SERIES machines to perform an end-to-end production process from card personalization to MAILING.



Data capturing module



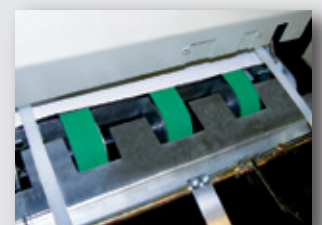
Encoding module



Card transport system HP



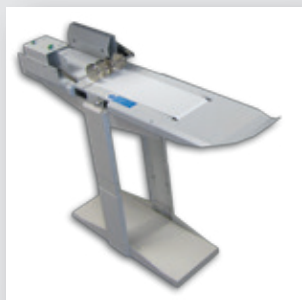
Labelling module



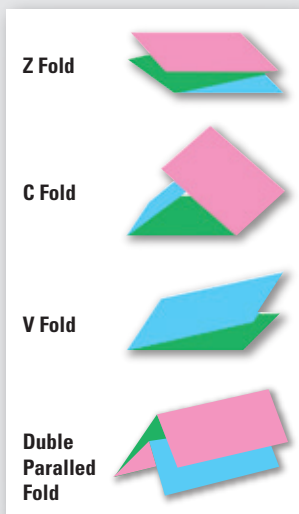
Carrier reject hopper



15" color touch screen



Envelope conveyor



Carrier folding



ADVANCED FOLDING & ENVELOPING SYSTEM

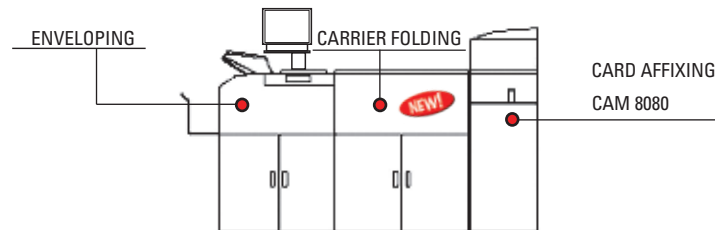
The CAM 3030 can be configured with MAXIMAILER SMART an innovative mailing system that folds and inserts card carriers and leaflets. The system can be customized to meet the requirements of the widest range of mailing applications.

The MAXIMAILER SMART is a multi-modular system and can be adapted to the various market requirements. Directly connected to CAM 3030, the MAXIMAILER SMART receives the carrier with the affixed card, folds and envelopes it. Other inserts (pre-folded brochure or booklet, up to 4 mm / 16 mil thick) can be managed by adding additional modules.

The MAXIMAILER SMART is equipped with a new folding station. The module's mechanics and functions have been refurbished, guaranteeing higher reliability and elevated fulfillment, which combined with operating system updates, offers a high performance solution

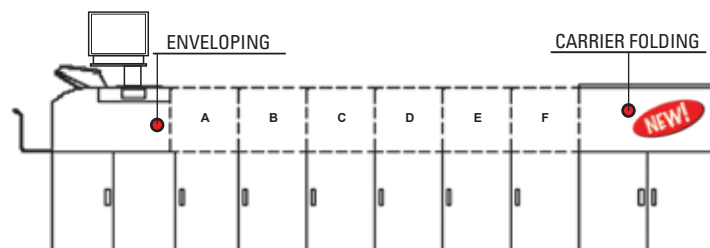
- Higher accuracy and reliability in the folding process, changes made to the transportation and mechanical system.
- Reduced db (more silent), thanks to the modules improved sound proofing.
- Easy access to the folding module allowing the removal jammed paper.

Thanks to the MAXIMAILER SMART's new user interface the module is managed intuitively and is extremely easy to use. The newest generation, 15' touch-screen display and enhanced operating system guide, assist the operator with a new type of controls. The new, user-friendly display allows the user to manage all the phases of the production process while remaining at their station, in addition, the new assistance function aids in the setup and in problem resolution.



MODULAR SYSTEM

The MAXIMAILER SMART is completely modular, up to 6 modules (A+B+...+F) can be linked in-line for attachment between the enveloping station and the carrier folder. You may configure it to your needs.



INSERTION MODULES

Insertion modules are available with single or double tray and can manage 10 x 21 cm / 3.94" x 8.27" size (e.g. booklet, brochure) for maximum thickness of 6 mm / 0.236", including the carrier with the card. Optional: Tower Folder, designed to save space.

Each module of MAXIMAILER SMART is equipped with double feeding control that ensures a seamless monitoring and verification of the whole process. If one feeder runs empty, another one takes over avoiding time breakdown

MULTICARD SOFTWARE

Easy-to-use, extremely flexible and ready for a variety of system configurations. The PRO SERIES equipment and MULTICARD Software have been developed for easy and secure card personalization and mailing using advanced technologies of data recognition and matching. Windows XP/Vista/7/8 operating system compatible. 100% data matching and carrier printing using data on card (magnetic stripe, smart card, barcode). Texts, images and logos management. Security checks: automatic carrier-card match verification by reading the barcode printed on the carrier; card sequence check before affixing on carrier

FEATURES AND SPECIFICATIONS

PERFORMANCE up to 1400 CPH depending on system and format;

AFFIXING - CARD AND CARRIER HANDLING

card dimensions CR80 - ISO standard
card thickness 0.76 ÷ 0.8 mm / 29,92 ÷ 31,5 mil
input hopper 200 cards, can be reloaded without interrupting card production
pre-embossed cards Yes
cards per carrier up to 8 (4 if folded)
card positioning defined by software

FOLDING & INSERTING - CARRIER, INSERT & ENVELOPE

carrier dimensions standard A4, letter size or legal size
carrier weight 80-100 gsm
carrier feed single one; multiple carrier
carrier printing Optional: Kyocera FS3800 series - Kyocera FS9100/9500 series - HP 4200/4300/4015 series
carrier folding Maximailer: Z, C, V folds
envelope types Maximailer: C5, C6

READING OPTIONS & DATA MATCHING

magnetic stripe reader standard reading system: 3 ISO 7811 tracks, LoCo, HiCo, JIS
OCR reader OCR KIT - NEW camera system provided with LED lighting to match card text with database cross check of personalized data
barcode reader NEW card barcode reader front/rear mono/bidimensional
smartcard unit contact and contactless
barcode carrier verification Yes - front / rear - for card/carrier matching

COMMUNICATION INTERFACE & SOFTWARE

communication interface RS232serialport
operating system **Multicard** compatible with Windows XP/Vista/7/8.
Error management, job report, DB source ODBC/OLEDB. Expert Field Engine.
application program User interface monitoring, card production control, pre-encoded card reading with complete "processing operation, system status and help messages displayed on personal computer. Rejected card alarm notification. Label presence sensor"
connection Smart Database, Multicard, DB Matching with Mag Tape (ISO, Jis), Microchip, Barcode. Microsoft Office integration, Barcode control. Several types of Database tables can be connected. Access, SQL Server, Oracle, and through ODBC Text, Excel.
protocol Chip10
software application (optional) **PowerCard Integration:** The PowerCard Integration software is capable of managing the whole production process, from data import to card mailing, supervising multiple production lines simultaneously and ensuring complete integrity of the production area in real time. PowerCard Integration is the perfect application for production environments where a high throughput and a wide range of jobs are the norm.

HARDWARE

power supply 100 - 117 -220 - 230 or 240 Volts - 50 or 60 Hz
power consumption CAM 3030 + Maximailer: 1100 W max
operating temperature 5° ÷ 35°C / 41° ÷ 95 °F
relative humidity 30% - 90% without condensation
dimensions (WxDxH) 1070 x 570 x 1220 mm / 42.12" x 22.44" x 48" in
weight 120 Kg (CAM 3030) / 265 lbs

PRO SERIES MULTI MODULAR SYSTEM - The Pro Series units can operate in a stand alone or in-line configuration with 2 up to 4 modules. The **CAM 3030** can be connected to: **MF 6000, T 1000/2000, E 1000/2000, C 1000, LD 1500**. The modular concept of the hardware with the easy-to-use MultiCard software makes the PRO SERIES a unique scalable system for complete card personalization.

